



HARKEN[®]
S P O R T



2013

Adult Size Range: XS • S • M • L • XL • XXL

Available Colors: Navy/Silver

SPRAY TOP

2013: Spray Top

Harken's waterproof, windproof, and breathable Spray Top is lightweight and features stretch fabric to maximize mobility.

FABRICS

Body: PU-coated nylon — Waterproof, breathable, windproof, UV-resistant, DWR-finished.

Back/elbow panels: Stretch PU-coated nylon and spandex, DWR finish. Collar/cuffs: Waterproof, windproof, breathable, and UV-resistant, PU-coated stretch fabric.

Hem: Neoprene.

Graphics: Screen-printed, saltwater-resistant, UV-resistant.

FEATURES



WATERPROOF



BREATHABLE
MOISTURE CONTROL



WIND-STOP

- Waterproof (WP 3000 mm) and windproof with DWR finish.
- Breathable.
- Fully-taped seams.
- Stretch panels across back and elbows.
- Articulated elbows.
- Extra-long arm length for maximum reach.
- Stretch PU soft-fit collar and cuffs.
- Roll-away Velcro™ tab at neck.
- Die-cut, rubberized Velcro™ tab at cuffs.
- Adjustable, neoprene waist with dropped rear hem.
- Easy-access chest pocket.
- Coated, water-resistant YKK zip with fabric and rubber block pull.

NEW



2076



CREW SQUALL JACKET

2076: Crew Squall Jacket – Unisex

The Crew Jacket is a comfortable, lightweight outer layer for wet conditions. The jacket's soft microfleece lining regulates your core temperature while the breathable and waterproof shell keeps you dry. A detachable, waterproof pouch and water-resistant pockets with inner attachment loop, offer a secure place for tools and electronics.

FABRICS

Waterproof and breathable polyester ripstop shell with polyester fleece lining.

FEATURES



- Waterproof (WP 10,000 mm), breathable (MP 5,000-8,000 mg/24hrs/m³), windproof.
- Breathable, waterproof, ripstop shell and microfleece lining keep you warm and dry.
- Zippered access to inside of shell allows for easy embroidery, perfect for team wear.
- Adjustable, dropped hem provides extra coverage in back.
- High, fleece-lined collar with stowable/removable hood.
- Adjustable, removable hood w/reflective visibility patches.
- Full-length, water-resistant zipper with storm flap and zipper garage.
- Two water-resistant pockets, an internal chest pocket with detachable waterproof case and a VHF/GPS pouch.
- Men's fit offers a unisex option with waist cord adjustment for team wear.
- Adjustable cuffs.
- YKK zippers.
- 20X DWR-coated membrane repels water.

Adult Size Range: XS • S • M • L • XL • XXL

Available Colors: Carbon/Ice • Navy/Ice • Red/Ice • Navy/Ice/Red



2070



Stowable squall hood



2071

Men's Size Range: S • M • L • XL • XXL

Women's Size Range: XS • S • M • L • XL

Available Colors (Men's and Women's): Carbon/Ice

SOFTSHELL JACKET

2070: Softshell Jacket – Men's Carbon with Hood

2071: Softshell Jacket – Women's Carbon with Hood

Harken's Softshell is a hybrid layer that evolved by combining these essentials: the need to be dry (waterproof), stop the wind (windproof), control internal moisture (breathability), repel water from exterior layer (DWR treatment), allow maximum flexibility (stretch), and regulate body temperature (fleece insulation). Stowable squall hood increases the utility of the garment. This durable, midweight layer fits a range of sailing styles, climates, and personal tastes.

FABRICS

Fabrics: Three-layer bonded fabric: polyester 2-way stretch with DWR treatment, PU membrane, and bonded fleece.

YKK zippers. Two-layer nylon hood with PU membrane.

FEATURES



- Waterproof (WP 5,000 mm), breathable (MP 5,000 g/m²), windproof.
- Abrasion resistant.
- Taped seams with new technology on the fleece side.
- Durable Water-Repellent (DWR) treatment (not coating).
- Stretch fabric for mobility.
- Temperature-regulated fleece insulation with air pockets.
- Stitch-free hand pockets, chest pocket, and zippers.
- Adjustable hem and wrist cuffs.
- Long length and dropped rear hem.
- Weather-resistant zippers with zipper garages.
- Fit designed specifically for a woman's contour (2071 only).
- YKK zippers.
- Logo will change to standard Harken logo, not oval as shown.

NEW



2074

Adult Size Range: S • M • L • XL • XXL

Available Colors: Carbon/Black only

FLEECE WINDBLOCKER JACKET

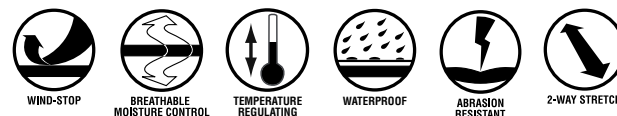
2074: Fleece Windblocker Jacket – Men's Full Zip

The Windblocker is a mid-weight outer layer that keeps you comfortable in cool, windy conditions. The jacket features abrasion-resistant softshell panels in key zones and 30X DWR on the exterior to repel water. The breathable membrane blocks wind, while a microfleece lining regulates body temperature. A relaxed fit allows you to layer underneath.

FABRICS

230-gram, highly breathable spandex/polyester microfleece.

FEATURES



- Waterproof (WP 10,000 mm), breathable (MP 5,000-8,000 mg/24hrs/m³), windproof.
- Soft, anti-pill fleece is warm and comfortable.
- Softshell panels in high-abrasion and “wet” zones repel water and dirt.
- Breathable, moisture-wicking, windproof, water-resistant membrane regulates body temperature.
- 30X DWR Teflon-treatment repels water.
- High, protective collar and full-length front zipper.
- Chest pocket and two zippered hand pockets.
- Adjustable hem.
- Adjustable cuffs.
- YKK zippers.

NEW



2072



2075

Men's Size Range: S • M • L • XL • XXL

Women's Size Range: XS • S • M • L • XL

Available Colors (Men's and Women's): Navy • Ice • Carbon

FLEECE JACKET

2072: Fleece Jacket – Men's Full Zip

2075: Fleece Jacket – Women's Full Zip

These jackets combine the warmth and comfort of outerwear with the breathable, lightweight properties of fleece. They can be worn as an outer layer or a thermal midlayer.

FABRICS

250-gram polyester microfleece.

FEATURES



2-WAY STRETCH



BREATHABLE
MOISTURE CONTROL



TEMPERATURE
REGULATING

- Soft, anti-pill fleece is warm and comfortable.
- Breathable, moisture-wicking fabric keeps you dry.
- Long, athletic fit for mobility.
- Discreet, zippered hand pockets.
- Full-length front zipper with storm flap, and adjustable hem.
- YKK zippers.

NEW



2073



FLEECE PULLOVER

2073: Fleece Pullover – Men's Quarter Zip

The fleece pullover is an ultra-lightweight, highly breathable layer than can be worn as an outer layer or a thermal midlayer.

FABRICS

140-gram polyester microfleece.

FEATURES



BREATHABLE
MOISTURE CONTROL



2-WAY STRETCH



TEMPERATURE
REGULATING

- Soft, anti-pill fleece is warm and comfortable.
- Breathable, wicking fabric keeps you dry.
- Athletic fit for easy layering.
- Discreet side pockets.
- Quarter-length zipper and adjustable hem.
- YKK zippers.

Adult Size Range: S • M • L • XL • XXL

Available Colors: Port Red • Navy • Carbon

NEW



2046



2045



Men's Size Range: S • M • L • XL • XXL

Available Colors (Long/Short Sleeve): Ice/Carbon • White/Navy

UV SHIRT

2046: UV Shirt – Men's Long Sleeve

2045: UV Shirt – Men's Short Sleeve

Worn next to the skin as a base layer, these quick-drying, anti-odor UV Shirts shield against abrasion and provide maximum sun protection at UPF 50+. Soft and comfortable next to skin with flat-lock seams in friction zones to prevent chafing. Highly breathable, stretch fabric and a relaxed fit allow you to move freely while staying cool.

FABRICS

50% recycled polyester and 50% white bamboo charcoal.

FEATURES



2-WAY STRETCH



QUICK DRY



UV-BLOCK



ANTIBACTERIAL

NEW



2048



2047

Women's Size Range: XS • S • M • L • XL

Available Colors (Long/Short Sleeve): Ice/Carbon • Ice/Mist • White/Navy

UV SHIRT

2048: UV Shirt – Women's Long Sleeve

2047: UV Shirt – Women's Short Sleeve

Worn next to the skin as a base layer, these quick-drying, anti-odor UV Shirts shield against abrasion and provide maximum sun protection at UPF 50+. Soft and comfortable next to skin with flat-lock seams in friction zones to prevent chafing. Highly breathable, stretch fabric and a relaxed fit allow you to move freely while staying cool.

FABRICS

50% recycled polyester and 50% white bamboo charcoal.

FEATURES



2-WAY STRETCH



QUICK DRY



UV-BLOCK



ANTIBACTERIAL

- UPF 50+ protection factor protects from harmful UV rays.
- Highly breathable and wicking ventilation panels regulate body temperature.
- Wicking fabric quickly transfers moisture away from the skin.
- Bamboo charcoal fabric has inherent anti-odor properties.
- Relaxed fit allows complete freedom of movement.
- Low profile accessory pocket.
- Made with recycled and renewable, sustainable fabrics.



Women's Size Range: XS • S • M • L • XL

Men's Size Range: Youth • S • M • L • XL • XXL

Available Colors (Men's and Women's) All Styles: Ice/Carbon/Red

RASHGUARD

2018: Rashguards – Women's Long Sleeve

2017: Rashguards – Women's Short Sleeve

2016: Rashguards – Men's Long Sleeve

2015 Rashguards – Men's Short Sleeve

This quick-drying layer prevents chafing under PFD or harness by using flatlock seam construction and moving seams to the outside of the shirt in friction zones. The mobility-stretch spandex in this performance garment has excellent UV protection at UPF 50+.

FABRICS

Nylon, spandex with 4-way stretch.

FEATURES



4-WAY STRETCH



QUICK DRY



UV-BLOCK



ANTIBACTERIAL

- UPF 50+ fabric is 10X that of a normal t-shirt.
- Antimicrobial fabric.
- Silicone strips on waistband (long and short sleeve) and on arms (short sleeve) to hold shirt in place.
- No underarm seams.
- Tall protective collar.
- Thumb holes on cuffs hold long sleeves in place.
- Combination of flat-locked and exterior seams and hems.
- Long- and short-sleeve styles.



2011



Stretch reinforcement seat
with removable foam pads

Men's Size Range: 28 • 30 • 32 • 34 • 36 • 38 • 40 • 42

Available Colors: Carbon • Navy • Rust

BALLISTIC ECO SHORTS

2011: Ballistic Eco Shorts – Men's w/pads

As Harken's contribution to the green movement for our environment, we are now using renewable, sustainable fabrics made with bamboo fibers and naturally odor-fighting carbon. These sailing shorts are made of durable 4-way stretch and wicking materials to allow freedom of movement without the restriction inherent in conventional fabrics. Incorporates back pockets with tough nylon reinforcement seat panel and removable foam pad insert.

FABRICS

Main fabric: Bamboo, carbon, nylon, spandex with 4-way stretch.

Secondary reinforcement fabric: stretch nylon.

FEATURES



4-WAY STRETCH



ABRASION
RESISTANT



BREATHABLE
MOISTURE CONTROL



ANTIMICROBIAL



TEMPERATURE
REGULATING

- Renewable, sustainable, naturally anti-microbial fabric.
- Tough, wicking stretch fabric with brushed interior for soft feel next to skin.
- Foam pad insert included.
- Stitch-free leg pocket.
- Diamond (crotch) gusset for mobility.
- Two extra-deep hand pockets.
- Semi-elastic waist band.
- Reinforced double-stitched seams.
- YKK zippers.

NEW



2049



ECO SHORTS

2049: Eco Shorts – Men's

These breathable, quick-dry bamboo-blend shorts are great for sports or as casual attire. High-stretch, anti-odor fabric allows freedom of movement, while the soft, brushed interior regulates temperature and keeps you comfortable all day.

FABRICS

Main fabric: Bamboo, carbon, nylon, spandex with 4-way stretch.

FEATURES



QUICK DRY



ANTIMICROBIAL



ABRASION
RESISTANT



4-WAY STRETCH



BREATHABLE
MOISTURE CONTROL



TEMPERATURE
REGULATING

- Naturally anti-microbial bamboo charcoal fabric wicks away moisture.
- Durable, quick-drying stretch materials are sewn with reinforced double-stitched seams.
- Soft, temperature-regulating, brushed interior.
- Diamond crotch gusset for mobility.
- Two extra-deep hand pockets, leg pocket and two back pockets.
- Semi-elastic waist band.
- YKK zippers.
- Renewable, sustainable, naturally anti-microbial fabric.

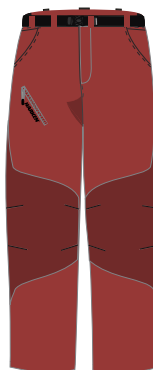
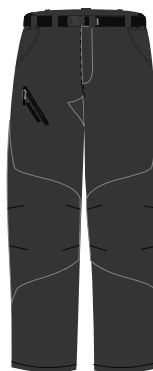
Men's Size Range: 28 • 30 • 32 • 34 • 36 • 38 • 40 • 42

Available Colors: Carbon • Sand • Navy • Rust

NEW



2050



BALLISTIC ECO PANTS

2050: Ballistic Eco Pants – Men's

These breathable, quick-dry bamboo blend pants are great for sports or as casual attire. Reinforced stretch panels in back and on the knees protect you from abrasion, while the soft, brushed interior regulates temperature and keeps you comfortable all day.

FABRICS

Main fabric: Bamboo, carbon, nylon, spandex with 4-way stretch.

Secondary reinforcement fabric: stretch nylon.

FEATURES



QUICK DRY



ANTIMICROBIAL



ABRASION
RESISTANT



4-WAY STRETCH



TEMPERATURE
REGULATING



BREATHABLE
MOISTURE CONTROL

- Naturally anti-microbial bamboo charcoal fabric wicks away moisture.
- Durable, quick-drying stretch materials are sewn with reinforced, double-stitched seams.
- Soft, temperature-regulating brushed interior.
- Two extra-deep hand pockets, leg pocket and two back pockets.
- Articulated knees, diamond (crotch) gusset, and semi-elastic waist band for mobility.
- Made with renewable, sustainable fabrics.
- YKK zippers.

Men's Size Range: 28 • 30 • 32 • 34 • 36 • 38 • 40 • 42

Available Colors: Carbon • Sand • Navy • Rust



Footwear Technology

Harken's One-Way Drainage System: A full-length **9-point drainage system** drains water away from the foot through a series of internal channels in the sole. Our one-way system prevents water and debris from reentering the shoe through the drainage ports.

Harken's Radial Traction Zones: The full **360-degree** pattern of siping allows siping flexion of the sole in all directions. This pattern is placed under the 3 main pressure zones of your foot to give each area independent traction. Used in combination with a special rubber compound, traction is greatly increased.

Siping: Siping is the process of cutting or molding small slits or grooves into the shoe sole. The sipes spread on contact with the deck, expelling water for superior traction. Escape channels push water out through the exit rim of the sole, providing additional drainage. As opposed to linear sipe patterns, our **radial siping grips in all directions**.

Antibacterial Silver-Woven Footbed: Silver's inherent properties neutralize odor-causing bacteria. Unlike spray-on finishes that wash away, **silver threads woven into the insole reduce odor for the lifetime of your shoe**.

Full-Length EVA Midsole: Compression-molded midsole cushions the foot, knees, and back to reduce fatigue.

Integrated Neoprene Collar: Stretch collar replaces shoe tongue for a **quick, comfortable fit**.

Lace Protector: Neoprene cover retains lace ends to prevent snagging.

Quick-Drying Materials: Synthetic materials manage moisture by dispersing it over a large surface area to dry. **Low-absorption, layered mesh increases air circulation for a cool, dry foot**.

UV-Treated Materials: Sole and upper materials are **UV-protected** to minimize discoloration and prevent the sole from hardening.

Stabilization Track: Controls ankle and foot rotation while maintaining freedom of movement by providing increased deck contact. Our wider toe box further stabilizes the shoe.

Pronation Control: Active arch support and the molded heel cup stabilize the foot and provide exceptional support for overpronators (people who roll the foot inward or outward).

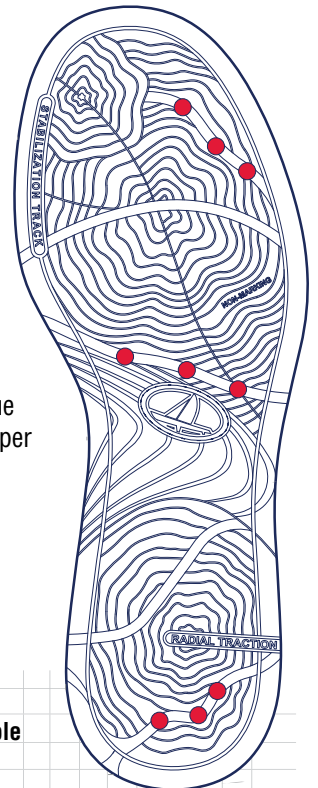
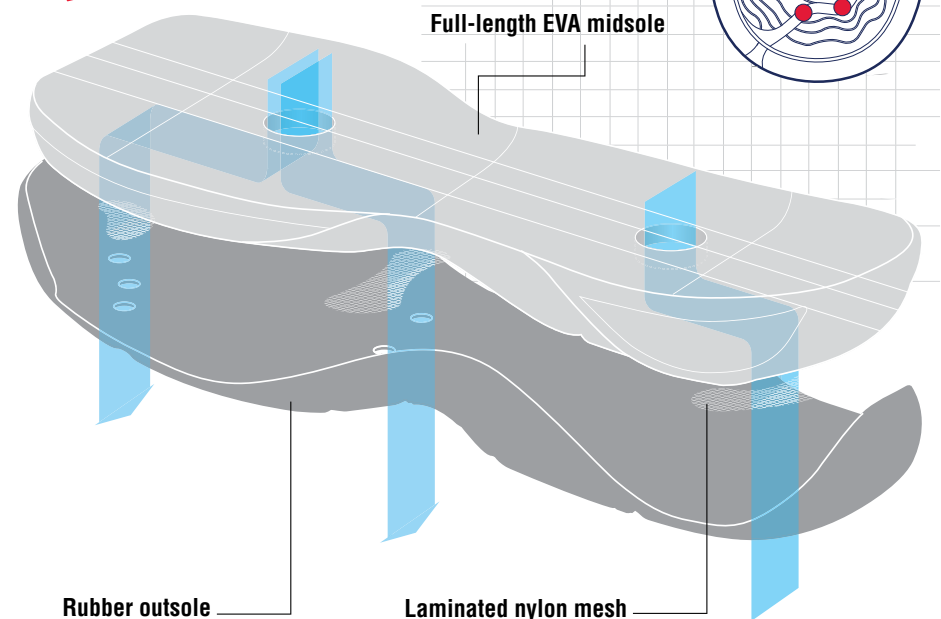
Metatarsal Support: Helps balance and reduces fatigue by slightly lifting the ball of the foot, allowing the toes to spread naturally.

Toe Box: A properly-shaped toe box (forefront part of the shoe) aids in metatarsal support, stability and comfort.

Active Arch Support: Support under the arch of your foot reduces strain on the plantar fascia, heel, back and knees.

Plantar Fascia: Improper support of the plantar fascia tissue that runs the span of the arch often leads to discomfort. Proper arch support can alleviate this condition.

Molded Heel Cup: Stabilizes and centers the heel.





2051



2061, 2062



2053

Men's Size Range: from 7 to 14, half from 7.5 to 11.5

Women's Size Range: from 6 to 10, half from 5.5 to 10.5

Mens Sizing

USA	7	7.5	8	8.5	9	9.5	10	10.5	11	11.5	12	13	14
UK	6	6.5	7	7.5	8	8.5	9	9.5	10	10.5	11	12	13
EURO	40	40.5	41	42	42.5	43	44	44.5	45	46	46.5	48	49

Womens Sizing

USA	5.5	6	6.5	7	7.5	8	8.5	9	9.5	10	10.5
UK	3.5	4	4.5	5	5.5	6	6.5	7	7.5	8	8.5
EURO	36	37	37.5	38	38.5	39	40	40.5	41	42	42.5

VORTEX SHOE

2051: Vortex – Men's Graphite

2053: Vortex – Men's Marine

2061: Vortex – Women's Carbon

2062: Vortex – Men's Carbon

MATERIALS

Sole: Rubber

Midsole: EVA

Upper: Synthetic

FEATURES

- **Harken's One-Way Drainage System:** A full-length, 9-point drainage system drains water away from the foot through a series of internal channels in the sole. Our one-way system prevents water and debris from reentering the shoe through the drainage ports.
- **Harken's Radial Traction Zones:** The full 360-degree pattern of siping allows siping flexion of the sole in all directions. This pattern is placed under the 3 main pressure zones in your foot to give each area independent traction. Used in combination with a special rubber compound, traction is greatly increased.
- Quick-dry materials.
- Nonmarking, nonrusting components.
- Integrated neoprene collar provides comfortable, secure fit.
- Lace Stopper for no-tie fastening (2061 and 2062 only).
- Neoprene lace protector.
- Antibacterial silver-woven footbed kills odor-causing bacteria.
- Full-length, compression-molded EVA midsole for shock absorption, neutral pronation, and all-day comfort.
- Stability Track controls ankle and foot rotation while maintaining freedom of movement.
- Metatarsal support provides all-day forefoot support in a wider toe box for improved balance.
- Active arch support reduces strain on plantar fascia and aligns knees.
- Molded heel cup provides shock absorption, support, reduces fatigue.

NEW



2069, 2088

Men's Size Range: from 7 to 14, half from 7.5 to 11.5

Women's Size Range: from 6 to 10, half from 5.5 to 10.5

Mens Sizing

USA	7	7.5	8	8.5	9	9.5	10	10.5	11	11.5	12	13	14
UK	6	6.5	7	7.5	8	8.5	9	9.5	10	10.5	11	12	13
EURO	40	40.5	41	42	42.5	43	44	44.5	45	46	46.5	48	49

Womens Sizing

USA	5.5	6	6.5	7	7.5	8	8.5	9	9.5	10	10.5
UK	3.5	4	4.5	5	5.5	6	6.5	7	7.5	8	8.5
EURO	36	37	37.5	38	38.5	39	40	40.5	41	42	42.5

VORTEX SHOE

2069: Vortex – Men's Navy/Ice

2088: Vortex – Women's Navy/Ice

MATERIALS

Sole: Rubber
Midsole: EVA
Upper: Synthetic

FEATURES

- **Harken's One-Way Drainage System:** A full-length, 9-point drainage system drains water away from the foot through a series of internal channels in the sole. Our one-way system prevents water and debris from reentering the shoe through the drainage ports.
- **Harken's Radial Traction Zones:** The full 360-degree pattern of siping allows siping flexion of the sole in all directions. This pattern is placed under the 3 main pressure zones in your foot to give each area independent traction. Used in combination with a special rubber compound, traction is greatly increased.
- Quick-dry materials.
- Nonmarking, nonrusting components.
- Integrated neoprene collar provides comfortable, secure fit.
- Women's Vortex fit designed specifically for women's feet (2064 only).
- Lace Stopper for no-tie fastening.
- Neoprene lace protector.
- Antibacterial silver-woven footbed kills odor-causing bacteria.
- Full-length, compression-molded EVA midsole for shock absorption, neutral pronation, and all-day comfort.
- Stability Track controls ankle and foot rotation while maintaining freedom of movement.
- Metatarsal support provides all-day forefoot support in a wider toe box for improved balance.
- Active arch support reduces strain on plantar fascia and aligns knees.
- Molded heel cup provides shock absorption, support, reduces fatigue.



2058



2059



2060

Men's Size Range: from 7 to 14, half from 7.5 to 11.5

Women's Size Range: from 6 to 10, half from 5.5 to 10.5

Mens Sizing

USA	7	7.5	8	8.5	9	9.5	10	10.5	11	11.5	12	13	14
UK	6	6.5	7	7.5	8	8.5	9	9.5	10	10.5	11	12	13
EURO	40	40.5	41	42	42.5	43	44	44.5	45	46	46.5	48	49

Womens Sizing

USA	5.5	6	6.5	7	7.5	8	8.5	9	9.5	10	10.5
UK	3.5	4	4.5	5	5.5	6	6.5	7	7.5	8	8.5
EURO	36	37	37.5	38	38.5	39	40	40.5	41	42	42.5

HYDROFLUX SHOE

2058: HydroFlux – Women's Sea Sprite

2059: HydroFlux – Men's Carbon

2060: HydroFlux – Men's Spindrift

MATERIALS

Outsole: Rubber

Midsole: EVA

Upper: Synthetic quick-dry materials.

FEATURES

- **Harken's One-Way Drainage System:** A full-length, 9-point drainage system drains water away from the foot through a series of internal channels in the sole. Our one-way system prevents water and debris from reentering the shoe through the drainage ports.
- **Harken's Radial Traction Zones:** The full 360-degree pattern of siping allows siping flexion of the sole in all directions. This pattern is placed under the 3 main pressure zones in your foot to give each area independent traction. Used in combination with a special rubber compound, traction is greatly increased.
- Women's HydroFlux fit designed specifically for women's feet (2058 only).
- Highly breathable, quick-dry mesh with protective layer against the foot.
- Breathable aerated synthetic leather for support and protection.
- TPU (Thermoplastic urethane) toe cap for protection.
- Integrated tongue wing to keep tongue in place.
- Fasten-quick system with lace stopper.
- Stretch lace protector.
- Nonmarking, nonrusting components.
- Antibacterial silver-woven footbed kills odor-causing bacteria.
- Full-length, compression-molded EVA midsole for shock absorption, neutral pronation, and all-day comfort.
- Stability Track controls ankle and foot rotation while maintaining freedom of movement.
- Metatarsal support provides all-day forefoot support in a wider toe box for improved balance.
- Active arch support reduces strain on plantar fascia and aligns knees.
- Molded heel cup provides shock absorption, support, reduces fatigue.

NEW



2078



2079

Men's Size Range: from 7 to 14, half from 7.5 to 11.5

Women's Size Range: from 6 to 10, half from 5.5 to 10.5

Mens Sizing

USA	7	7.5	8	8.5	9	9.5	10	10.5	11	11.5	12	13	14
UK	6	6.5	7	7.5	8	8.5	9	9.5	10	10.5	11	12	13
EURO	40	40.5	41	42	42.5	43	44	44.5	45	46	46.5	48	49

Womens Sizing

USA	5.5	6	6.5	7	7.5	8	8.5	9	9.5	10	10.5
UK	3.5	4	4.5	5	5.5	6	6.5	7	7.5	8	8.5
EURO	36	37	37.5	38	38.5	39	40	40.5	41	42	42.5

HYDROFLUX SHOE

2078: HydroFlux – Men's Solar

2079: HydroFlux – Women's Mist

MATERIALS

Outsole: Rubber

Midsole: EVA

Upper: Synthetic quick-dry materials

FEATURES

- **Harken's One-Way Drainage System:** A full-length, 9-point drainage system drains water away from the foot through a series of internal channels in the sole. Our one-way system prevents water and debris from reentering the shoe through the drainage ports.
- **Harken's Radial Traction Zones:** The full 360-degree pattern of siping allows siping flexion of the sole in all directions. This pattern is placed under the 3 main pressure zones in your foot to give each area independent traction. Used in combination with a special rubber compound, traction is greatly increased.
- Women's HydroFlux fit designed specifically for women's feet (2079 only).
- Highly breathable, quick-dry mesh with protective layer against the foot.
- Breathable aerated synthetic leather for support and protection.
- TPU (Thermoplastic urethane) toe cap for protection.
- Integrated tongue wing to keep tongue in place.
- Fasten-quick system with lace stopper; Stretch lace protector.
- Nonmarking, nonrusting components.
- Antibacterial silver-woven footbed kills odor-causing bacteria.
- Full-length, compression-molded EVA midsole for shock absorption, neutral pronation, and all-day comfort.
- Stability Track controls ankle and foot rotation while maintaining freedom of movement.
- Metatarsal support provides all-day forefoot support in a wider toe box for improved balance.
- Active arch support reduces strain on plantar fascia and aligns knees.
- Molded heel cup provides shock absorption, support, reduces fatigue.



2054
Limited Availability



2055



2056

Men's Size Range: from 7 to 14, half from 7.5 to 11.5

Women's Size Range: from 6 to 10, half from 5.5 to 10.5

Mens Sizing

USA	7	7.5	8	8.5	9	9.5	10	10.5	11	11.5	12	13	14
UK	6	6.5	7	7.5	8	8.5	9	9.5	10	10.5	11	12	13
EURO	40	40.5	41	42	42.5	43	44	44.5	45	46	46.5	48	49

Womens Sizing

USA	5.5	6	6.5	7	7.5	8	8.5	9	9.5	10	10.5
UK	3.5	4	4.5	5	5.5	6	6.5	7	7.5	8	8.5
EURO	36	37	37.5	38	38.5	39	40	40.5	41	42	42.5

VALENCIA SHOE

2054: Valencia – Men's Mahogany

2055: Valencia – Women's Bone

2056: Valencia – Men's Bone

MATERIALS

Sole: Rubber

Midsole: EVA

Upper: Genuine water-resistant-treated leather and synthetic materials.

FEATURES

- **Harken's Radial Traction Zones:** The full 360-degree pattern of siping allows siping flexion of the sole in all directions. This pattern is placed under the 3 main pressure zones in your foot to give each area independent traction. Used in combination with a special rubber compound, traction is greatly increased.
- Integrated tongue wing to keep tongue in place.
- Neoprene lace protector.
- Lace Stopper for no-tie fastening (2056 only).
- Nonmarking, nonrusting components.
- Antibacterial silver-woven footbed kills odor-causing bacteria.
- Full-length, compression-molded EVA midsole for shock absorption, neutral pronation, and all-day comfort.
- Comes with extra laces in alternative color.
- Stability Track controls ankle and foot rotation while maintaining freedom of movement.
- Metatarsal support provides all-day forefoot support in a wider toe box for improved balance.
- Active arch support reduces strain on plantar fascia and aligns knees.
- Molded heel cup provides shock absorption, support, reduces fatigue.

NEW



2057

Men's Size Range: from 7 to 14, half from 7.5 to 11.5

Mens Sizing

USA	7	7.5	8	8.5	9	9.5	10	10.5	11	11.5	12	13	14
UK	6	6.5	7	7.5	8	8.5	9	9.5	10	10.5	11	12	13
EURO	40	40.5	41	42	42.5	43	44	44.5	45	46	46.5	48	49

CLASSIC LEATHER SHOES

2057: Men's Classic Leather Brown

MATERIALS

Upper: Genuine, waterproof-treated leather and synthetic materials.

Outsole: Rubber

Midsole: EVA

FEATURES

- **Harken's Radial Traction Zones:** The full 360-degree pattern of siping allows siping flexion of the sole in all directions. This pattern is placed under the 3 main pressure zones in your foot to give each area independent traction. Used in combination with a special rubber compound, traction is greatly increased.
- Non marking, non rusting components.
- Antibacterial silver-woven footbed kills odor-causing bacteria.
- Full-length compression-molded EVA midsole for all-day comfort.
- Stability Track controls ankle and foot rotation while maintaining freedom of movement.
- Metatarsal Support provides all-day forefoot support in a wider toe box for improved balance.
- Active Arch Support reduces strain on plantar fascia and aligns knees.
- Molded heel cup provides shock absorption, support, reduces fatigue.



SUNGLASSES TECHNOLOGY

FRAMES are tough, flexible nylon Grilamid®. Chemically-resistant to sunscreens.

LENSES are polarized and block 100% of UVA, UVB, UVC rays. Distortion-free glass or polycarbonate.

1. **Hydrophobic Coating** repels water for a clear view. Cleans easily.
2. **Anti-Reflective** coating prevents light bouncing off back of lens and into the eye.
3. **Anti-Scratch** layer to reduce lens damage.
4. **Distortion-Free**, injection-molded lens. The optical center placed in front of the eye for clarity. The tapered shape directs light into optical center.
5. **Polarized** film blocks 99.9% of glare.
6. **Flash Mirror Coating** further reduces the amount of reflected light entering lens.





2090



2091



2092



2093



2094
Limited Availability



2095



2096



2097



2474



2572

SUNGLASSES

- 2090: Sunglasses – Grinder, Skippy Blue
- 2091: Sunglasses – Grinder, Razor Red
- 2092: Sunglasses – Navigator, Ruby Red
- 2093: Sunglasses – Gale, Storm Gray
- 2094: Sunglasses – Poppet, Mineral
- 2095: Sunglasses – Mariner, Tortoise
- 2096: Sunglasses – Typhoon, Spindrift Green
- 2097: Sunglasses – Mariner, Olive
- 2474: Sunglasses – Sport, Matte Black Rubberized
- 2572: Sunglasses – Sport, Metallic Gray

MATERIALS

Lenses: Injection-molded, treated polycarbonate lenses; tempered borosilicate glass (2572 only). Frames: Nylon Grilamid, Megol rubber.

FEATURES

- Nylon Grilamid® frames are tough, flexible, chemically-resistant to sunscreens, and hypo-allergenic.
- Polarized lenses block 100% UVA, UVB, UVC rays, absorb 99.9% reflected glare.
- Distortion-free, tempered borosilicate glass.
- Distortion-free, injection-molded, impact-resistant polycarbonate lenses.
- Hydrophobic lens coating repels water, resists water spots and eases cleaning.
- Exterior flash mirror coating reduces reflections and glare.
- Anti-scratch coating protects optical clarity.
- Interior antireflective coating eliminates reflections and enhances optical acuity.



2563

Available in junior sizes



2564

Junior Size Range: M

Adult Size Range: XS • S • M • L • XL • XXL

CLASSIC SAILING GLOVE

2563: Classic – 3/4 Finger

2564: Classic – Full-finger

Our classic glove designed as an all-purpose, warm-weather sailing glove. Features the classic Black Magic® palm material; a perfect balance between abrasion-resistance and grip.

MATERIALS

Black Magic® palm material, Amara and corded nylon.

FEATURES

- Durable double-thick Black Magic® palm material for superior grip.
- Nylon Spandex® mesh for super fit.
- Minimal stretch when wet.
- Dries soft.
- Closure tab on underside of wrist prevents accidental push of buttons on watch.
- Tab lock feature ensures secure closure.



2083



2084



REFLEX SAILING GLOVE

2083: Reflex – 3/4 Finger

2084: Reflex – Full-Finger

A responsive performance sailing glove designed for longer life during active line handling in all conditions. Features a more durable double-thick Black Magic® palm material.

MATERIALS

Sticky, abrasion-resistant Black Magic® palm and finger wraps provide superior grip, while maintaining dexterity and freedom of movement. Double-thick palm material for durability.

Stretch-woven material and molded-rubber guard strips across the back provide lightweight protection.

FEATURES

- Black Magic® palm material for superior grip, lasting protection.
- Durable Black Magic® finger wraps reduce seam bulk, and increase dexterity.
- Protective palm pad.
- Low-profile watch cutout.
- Molded-rubber wrist closure.
- Pull-on tab for easy on/off.
- Mesh vents at base of fingers give a cool, custom fit.
- Reinforced fingertips.
- Molded-rubber guard strips on back.
- Now with improved fit.

Adult Size Range: XS • S • M • L • XL • XXL



2086



Available in junior sizes



SPECTRUM SAILING GLOVE

2086: Spectrum – 3/4 Finger

Designed for active line handling, this low-profile, lightweight, flexible design reduces bulk and fatigue on hands.

MATERIALS

Palm: High durability Black Magic® palm material.
Backhand: Breathable, quick-dry stretch fabric.

FEATURES

- Available in blue, pink, and high-visibility green.
- High-durability Black Magic® palm material and finger wraps provide the highest level of abrasion resistance, protection, and durability.
- Durable Black Magic® finger wraps reduce seam bulk and increase dexterity.
- Mesh vents at base of fingers provide a cool, custom fit.
- Low-profile watch cutout.
- Pull-on tab for easy on and off.
- Reinforced fingertips.

Adult Size Range: S • M • L • LX • XXL Available Colors: Blue • Pink • Green

Junior Size Range: M • L Available Colors: Blue • Pink



TRIMMER SAILING GLOVE

2087: Trimmer – Five Finger

Complete 5-finger glove protection. Durable, full-finger design protects hands when easing and trimming high-load lines. Harken's WrapFit construction moves seams out of critical wear and flex points, increasing dexterity and durability. Double-thick palm material for durability.

MATERIALS

Palm: Highly durable Black Magic® palm material.

Backhand: Breathable quick-dry stretch fabric, molded neoprene.

FEATURES

- Complete 5-finger protection with reinforced fingertips.
- Black Magic® palm material provides outstanding abrasion resistance, protection and durability.
- WrapFit construction positions seams away from critical wear and flex points to increase dexterity and durability.
- Molded neoprene knuckle guard.
- Molded hook-and-loop wrist closure.
- Pull-strap for easy on and off.

Adult Size Range: XS • S • M • L • XL • XXL



2085

FROSTBITER SAILING GLOVE

2085: Frostbiter – Five Finger

A weather-resistant sailing glove designed for active line handling in cold conditions.

MATERIALS

Sticky, abrasion-resistant Black Magic® palm and finger wraps provide superior grip, while maintaining dexterity and freedom of movement.

Stretch-woven material bonded to neoprene over the back of the hand for warmth in wet conditions. Stretch softshell fleece panels for mobility and insulation.

FEATURES

- Complete 5-finger protection for added warmth.
- 1.5 mm neoprene and softshell fleece panels give warmth and mobility.
- Black Magic® palm material for superior grip, lasting protection.
- Durable Black Magic® finger wraps reduce seam bulk, and increase dexterity.
- Protective palm pad.
- Extended neoprene cuff mates with spray top.
- Molded-rubber wrist closure.
- Stretch softshell fleece at base of fingers for a soft, custom fit.
- Molded-rubber guard strips on back.

Adult Size Range: XS • S • M • L • XL • XXL



2581

Dimensions: 22" x 11" x 11.5" (55 x 28 x 29 cm)
Volume: 2,500 Cubic Inches (45 Cubic Liters)



2022

Dimensions: 29" x 14" x 14" (74 x 35 x 35 cm)
Volume: 5500 Cubic Inches (90 Liters)



External water-resistant pocket

SQUALL BAG

2581: Squal Bag – Medium

2022: Squal Bag – Large

These bags feature fully waterproof seam construction with water-resistant YKK zippers. Seams incorporate radio-frequency welded panels or are stitched and taped for a watertight seal. Rounded edges reduce abrasion-prone corners.

MATERIALS

Colorfast and UV-resistant RFX polyurethane-impregnated nylon.

FEATURES

2581

- Ergonomic padded/removable shoulder strap.
- Welded neoprene grab handles.

2022

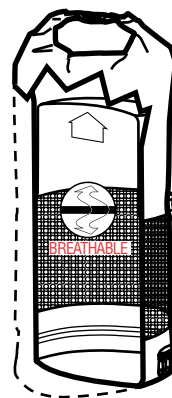
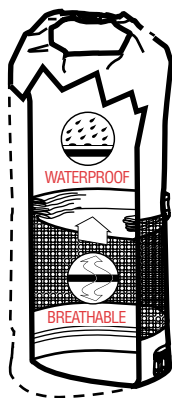
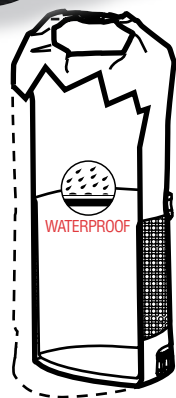
- High-capacity bag for team gear or long trips.
- Internal organizer pocket.
- Welded grab handles at each end.
- Welded adjustable carry straps also function as backpack straps.
- Double slider, water-resistant zippers allow access to any part of the bag.

2581, 2022

- Embroidery-friendly pocket.
- Water-resistant YKK zippers.
- Waterproof welded and taped seams.
- PVC free.



2019



ROLL-TOP WET/DRY BAG

2019: Roll-Top Wet/Dry Bag

The stitch-free waterproof construction and roll-top closure of the Wet/Dry Bag protects gear from rain, sea spray and the occasional submersion. An expandable mesh drying compartment separates wet from dry gear. Each compartment expands to function as a full-length waterproof bag, full-length breathable mesh bag, or a combination of both.

MATERIALS

210D TPU-impregnated nylon (waterproof/UV-resistant/colorfast).

FEATURES

- Roll-top closure at top for a watertight seal.
- Two roll-top fastening points to accommodate large or small loads.
- Exterior mesh compartment with bonded zipper opening at bottom separates/dries wet gear.
- Reinforced bottom panel.
- Welded seams and components.
- Air-purge valve.
- Adjustable/removable carry straps also function as backpack straps.
- Lightweight material and compressible design.
- PVC free.
- YKK zippers.

Dimensions: 31" x 15" x 7" (79 x 38 x 18 cm)
Volume: 2750 Cubic Inches (45 Liters)



2260

Dimensions: 13" x 6" x 16" (33 cm x 15 cm x 41 cm)
Volume: 20 Liters

ROLL-TOP BAG

2260: Roll-Top Bag

The Harken Roll-Top Bag keeps gear dry in a large watertight main compartment and water-resistant accessory pockets.

MATERIALS

Waterproof TPU-coated nylon (PVC-free), ripstop nylon, stretch mesh

FEATURES

- Convertible roll-top closure provides a watertight seal and stows away when not in use.
- Stitch-free waterproof construction.
- Welded accessory pocket with water-resistant zipper.
- Dual mesh side pockets for water bottles, shoes, and other gear.
- Straps can be worn on shoulder or carried by hand.
- YKK zippers.





2262

Dimensions: 14.5" x 9" x 21" (36 cm x 22 cm x 53 cm)
Volume: 45 Liters

ROLL-TOP CARRY-ALL

2262: Roll-Top Carry-All – Large

The Harken Roll-Top Carry-All combines the simplicity of shopping bag with the trusted performance of a dry bag. The convertible roll-top sleeve stows neatly inside the bag while allowing easy access to contents. The sleeve creates a watertight barrier that protects gear in the main compartment when in use, while additional water-resistant pockets organize smaller items. Shoulder straps and carrying handles make travel easy.

MATERIALS

Waterproof TPU-coated nylon (PVC-free).

FEATURES

- Stowable, convertible roll-top closure provides a watertight seal.
- Stitch-free waterproof construction.
- Welded accessory pocket with water-resistant zipper.
- Reinforced grab handles and adjustable shoulder strap.
- Webbing loops to attach extra gear.
- YKK zippers.





2263



2264

Dimensions: 19" x 13.5" x 5.25"
Volume: 1900 cubic inches (31 Liters)

TRANSITION BACK PACK

2263: Transition Back Pack – Red

2264: Transition Back Pack – Gray

The Harken Transition Backpack makes the shift from land to on-the-water activities easy and organized.

MATERIALS

100% Polyester Ripstop (PU coated)

FEATURES

- Embroidery-friendly.
- Ventilated mesh drying compartment separates shoes or wet gear.
- YKK zippers.
- Soft sunglasses pocket doubles as cleaning cloth.
- Padded air-mesh back panel and shoulder straps.
- Padded 15.4" laptop sleeve.
- Organizer pocket with key clip.
- Dual stretch-mesh water bottle pockets.
- Stretch-mesh cell-phone pocket on shoulder strap.
- Adjustable bungee cord system with reflective trim.



2261



ROLLING CARRY-ON 3-IN-1

2261: Rolling Carry-On 3-in-1

The 3-in-1 Harken Rolling Carry-On is a backpack, wheeled bag, and a handy carry-on all in the same smart pack.

FEATURES

- Detachable daypack with laptop sleeve and S-shaped shoulder straps.
- Embroidery-friendly.
- Meets carry-on size regulations for most U.S. airlines.
- Padded backpack straps stow behind main compartment's zippered back panel.
- Zippered accessory pocket, two water-bottle pockets, and a back strap allow pack to slip over the main bag's extended handle.
- Stash pockets with coated water-resistant zippers on the daypack and main compartment.
- Padded 15.4" laptop sleeve.
- Quick-clip buckle at top of removable daypack attaches to main bag.
- Oversized, durable wheels on both daypack and main bag.
- Telescoping, locking handle.
- Ergonomic Sure-Grip handle with mesh padding wicks moisture.
- Integrated luggage ID-tag holder.

Dimensions:

Entire Piece: 22" x 14" x 13.25" (56 cm x 36 cm x 34 cm), Volume: 50 Liters

Without daypack: 22" x 14" x 8" (56 cm x 36 cm x 20 cm)

Daypack: 19" x 13.5" x 5.25" (48 cm x 34 cm x 13 cm)



2580

Dimensions: 30" x 14" x 14" (76 x 36 x 36 cm)

ROLLING DUFFEL

2580: Rolling Duffel – Large

Updated! More features, more durable.

MATERIALS

Ripstop nylon/1680D nylon/sailcloth

FEATURES

- Telescoping and locking handle.
- Water-resistant expanding wet/dry pocket to keep wet/dirty items separated.
- Multiple exterior pockets to keep gear organized and accessible.
- Interior organization pockets.
- Load-stabilizing compression straps.
- Neoprene-padded carry straps.
- Two rubberized grab handles at each end for easy loading/unloading.
- Heavy-duty urethane wheels.
- YKK zippers.
- Durable 1680D nylon bottom with neoprene wheel cover, safe for boat deck/cabin floor.



1251 E. Wisconsin Ave.
Pewaukee, WI 53072 USA